

# AGRICULTURE AND THE ENVIRONMENT



## TRIBAL RESPONSE PROGRAM

ENVIRONMENTAL DEPARTMENT  
SAC & FOX NATION OF MISSOURI  
IN KANSAS AND NEBRASKA  
401 NORTH ARCH STREET  
RESERVE, KANSAS, 66434  
P: 785-742-4706; F: 785-742-2180  
WWW.SACFOXENVIRO.ORG



Please contact us with  
any questions,  
comments, suggestions,  
or information on  
environmental hazards  
or illegal dumping  
occurring in the  
community.

**Tribal Response Coordinator  
Mark Junker**

Office: 785-742-4706

Cell: 785-288-1321

[mark.junker@sacfoxenviro.org](mailto:mark.junker@sacfoxenviro.org)

## WHAT IS SAC AND FOX NATION'S TRIBAL RESPONSE PROGRAM?

Sac and Fox Nation's Tribal Response Program is funded through the Comprehensive Environmental Response, Compensation, and Liability Act (CERCLA) or "Superfund" Section 128(a). Environmental Protection Agency (EPA) Regional Offices administer the funds by awarding grants to Tribal Response Programs.

Sac and Fox's Tribal Response Program currently focuses on identifying and cleaning up illegal dump sites, educating the public about illegal dumping, and increasing the Nation's emergency preparedness.

## OTHER ENVIRONMENTAL DEPARTMENT PROGRAMS:

- GENERAL ASSISTANCE
- SURFACE WATER PROGRAM
- AIR QUALITY PROGRAM
- RECYCLING PROGRAM

# AGRICULTURE AND THE ENVIRONMENT

WHAT YOU CAN DO ON YOUR LAND TO PROTECT HUMAN HEALTH AND THE ENVIRONMENT

www.sacfoxenviro.org



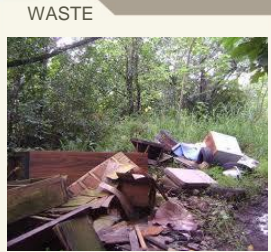
BURNING



PESTICIDES



MANURE



WASTE

Agricultural burning, pesticide application, manure application, and illegal dumping are the main agricultural concerns related to human health and the environment. Please consider a few guidelines (listed right) when conducting agricultural burning, manure application, and waste disposal at Sac and Fox Nation. Please contact us (contact information on back) with any questions.

## Agricultural burning

- Identify potential hazards (roads, homes, electrical lines, etc.).
- Notify nearby residents and local safety officials.
- Ensure that burn crew members can communicate with each other and safety officials.
- Allow several days of drying time
- Do not burn at field edges.
- Winds speeds of 5-15 mph from a desirable direction are recommended.
- Do not burn in drought conditions and be aware of local burning bans.

Source: "Agricultural Burning and Best Management Practices". MDNR and MDA.  
<http://www.dnr.mo.gov/pubs/pub2253.pdf>

## Manure application

- Match manure application rates to crop nutrient requirements
- Adopt reduced tillage

- Establish buffer strips between fields and surface water (creeks, rivers, etc.)
- Do not apply manure on frozen soil or snow covered ground.
- Protect agriculture and drinking water wells adequately with casing and caps.

Source: "Manure and the Protection of Water, Soil, and Air". Saskatchewan Agriculture, Food and Rural Revitalization. <http://www.agriculture.gov.sk.ca/Default.aspx?DN=84e7a80e-d3fd-444a-a15c-bd5047ec64d1>

## Illegal dumping

- Do not dump plastics, metals, chemicals, machinery, or household items on land or in waterways.
- Properly dispose of materials by recycling them at the Environmental Department (address on front) or by contacting Brown County Household Hazardous Waste at 785-547-3552 or Atchinson County Solid Waste at 913-367-1666.